

# G/F UNIT A

## Accessibility

Ground Floor

## Features

High ceilings

Frontage on two sides

Toilets provided

Possible signage on Queen's Road West

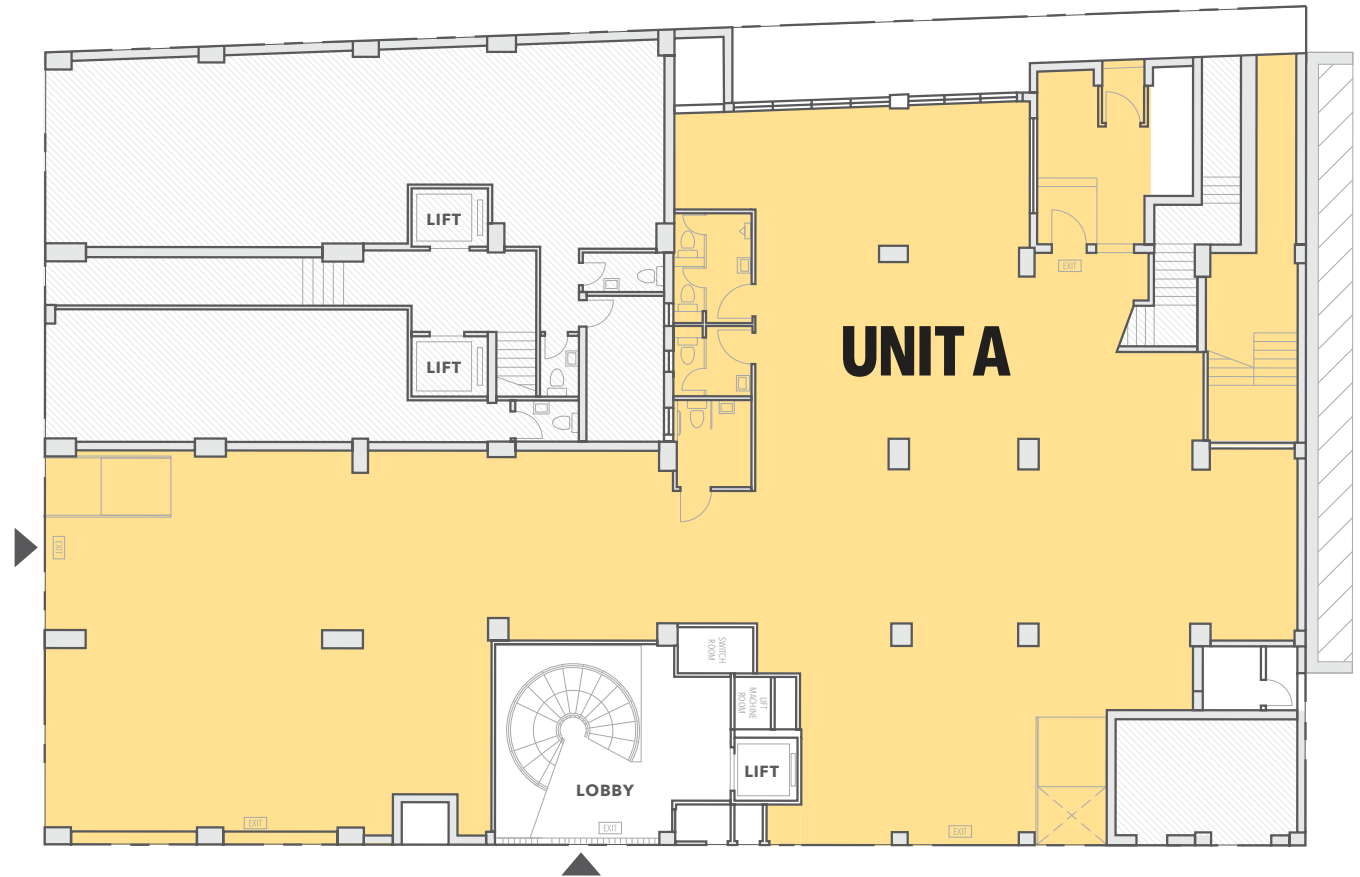
Great accessibility for building tenants and pedestrians

## **UNIT A 6,319 sqft (gross)**

This unit sits on the ground floor with two frontages along Queen's Road West and Yat Fu Lane. It is a perfect space for any business wanting to take advantage of the street level's alfresco nature and wide exposure. With 3.8m ceilings and the feeling of a ground floor loft space, this is a really interesting and unique unit for any restaurant, open plan art gallery or artisanal coffee shop.

YAT  
FU  
LANE

QUEEN'S ROAD WEST 皇后大道西



YAT FU LANE 日富里

CEILING HEIGHT: 3.8M