

2/F UNIT C

Accessibility

- Elevator
- Large feature staircase

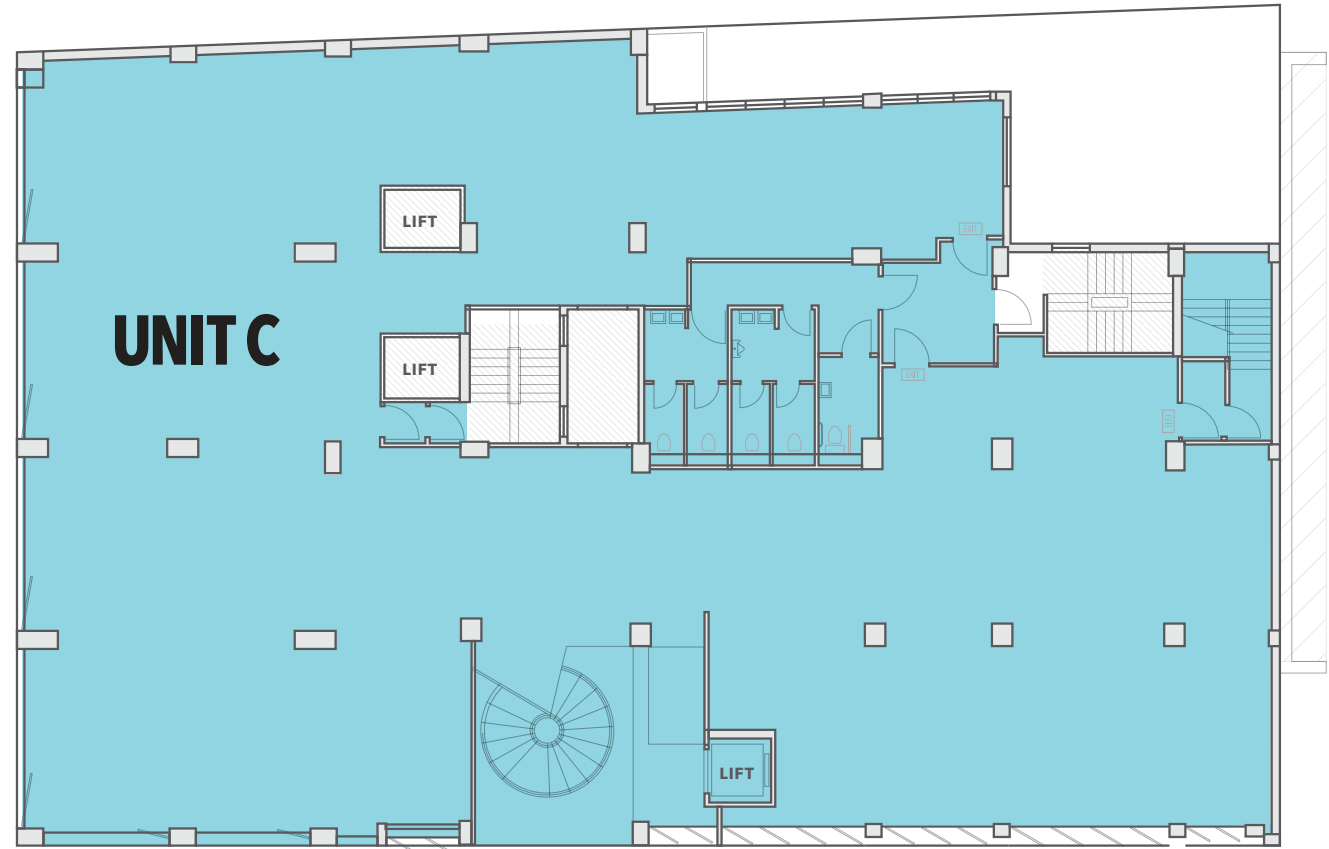
Features

- Floor to ceiling windows
- Frontage on two sides
- HVAC
- Toilets provided
- Possible signage on ground floor and Queen's Road West

UNIT C 9,220 sqft (gross)

Sitting above the first floor, this unit is accompanied by floor to ceiling windows with great exposure onto Queen's Road West at the front and Yat Fu Lane to the side. With a polished concrete finished floor, HVAC and toilets provided, this unit is ready to move in to and can be F&B compliant. This unit has sufficient power and facilities making it flexible in purpose for a restaurant, office or gallery space with a view.

QUEEN'S ROAD WEST 皇后大道西



YAT
FU
LANE

YAT FU LANE 日富里

CEILING HEIGHT: 3.2M