

G/F HAWKER

Accessibility

Ground Floor

Features

High ceilings

Frontage on two sides

Toilets provided

Possible signage on Queen's Road West

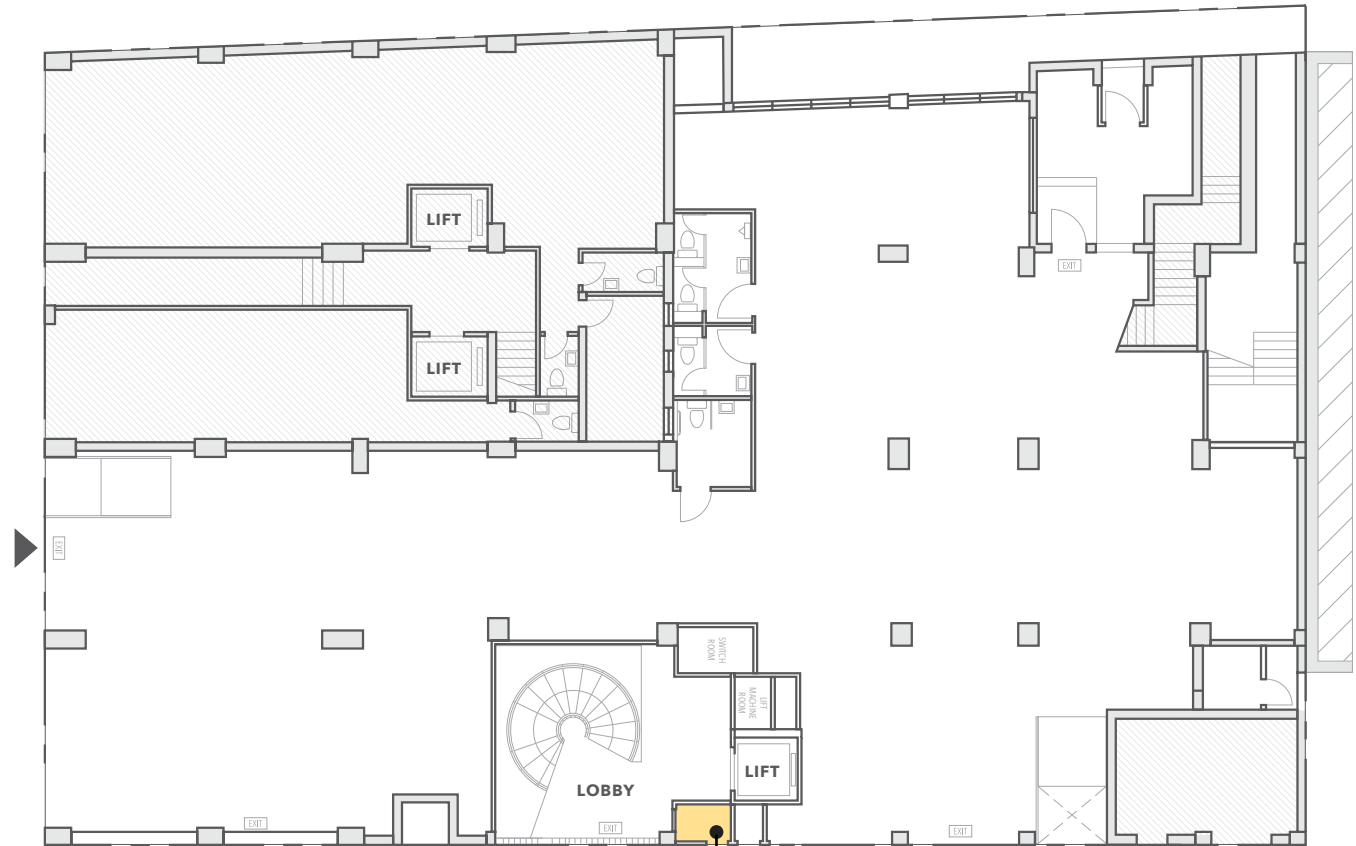
Great accessibility for building tenants and pedestrians

HAWKER 27 sqft (gross)

They say that good things come in small packages and this one packs a punch. The space pays tribute to the spirit of entrepreneurship, especially to the Hong Kong hawkers who built their livelihoods from small stands on the street. Featuring two frontages, one on Yat Fu Lane and the other into the building lobby, this unit would be great for a grab and go outlet, a petite exhibition space or a pop-up retail outlet.

YAT
FU
LANE

QUEEN'S ROAD WEST 皇后大道西



HAWKER

YAT FU LANE 日富里

CEILING HEIGHT: 3.8M

